

1/50 沿岸貨物船 STEAM COASTER

# スターライト STAR LIGHT

組立説明書

ASSEMBLING INSTRUCTION



株式会社斎藤製作所

千葉県市川市稲荷木3-22-7

TEL: 047-378-4156 FAX: 047-378-4155

<http://www.saito-mfg.com>



Let us express our sincere thanks for your favoring Saito Seisakusho, Ltd., particularly for your purchase of the "STAR LIGHT", Steam Coaster. For your convenience, please prepare the following tools and adhesives before assembly.

#### Tools

Scroll Saw, Small Plane (Balsa Plane, etc.), Cutting Pliers, Nipper, Hair Dryer, Soldering Iron, Tweezers, Small Electric Drill, Files (Flat Type 10 m/m approx., Round Type 3 m/m and 8 m/m approx.), Sandpapers (#240 and #80), Compass, Metal Rod for fittings (6 m/m x 200 m/m, with 5 m/m depth of the top cut by metal saw).

Adhesives Marks 1 2 3 are used in the instructions.

1 Cyano-Instant Adhesive (About 15 grams)

2 types are available such as thickening and thin type. But, please use thin type only. The delicate point is a small quantity and flat a contact surface as much as possible. If you apply a large quantity, wipe it off with a cloth. At this time, an instant cementation is obtained if you use an accelerant. This is good for temporary plywood houses so that assembly time is largely saved.

2 Epoxy Adhesive (5 minutes type) About 70 grams

Use a hair dryer and induce it with a wire, etc., for a beautiful glueing with a small quantity. Glueing time is faster. Please do not use a hair dryer for pile arrangements.

3 Epoxy Adhesive (30 minutes type)

Please do not use a hair dryer. Surrounding temperature (20°C over) is preferable in winter.

#### Paint

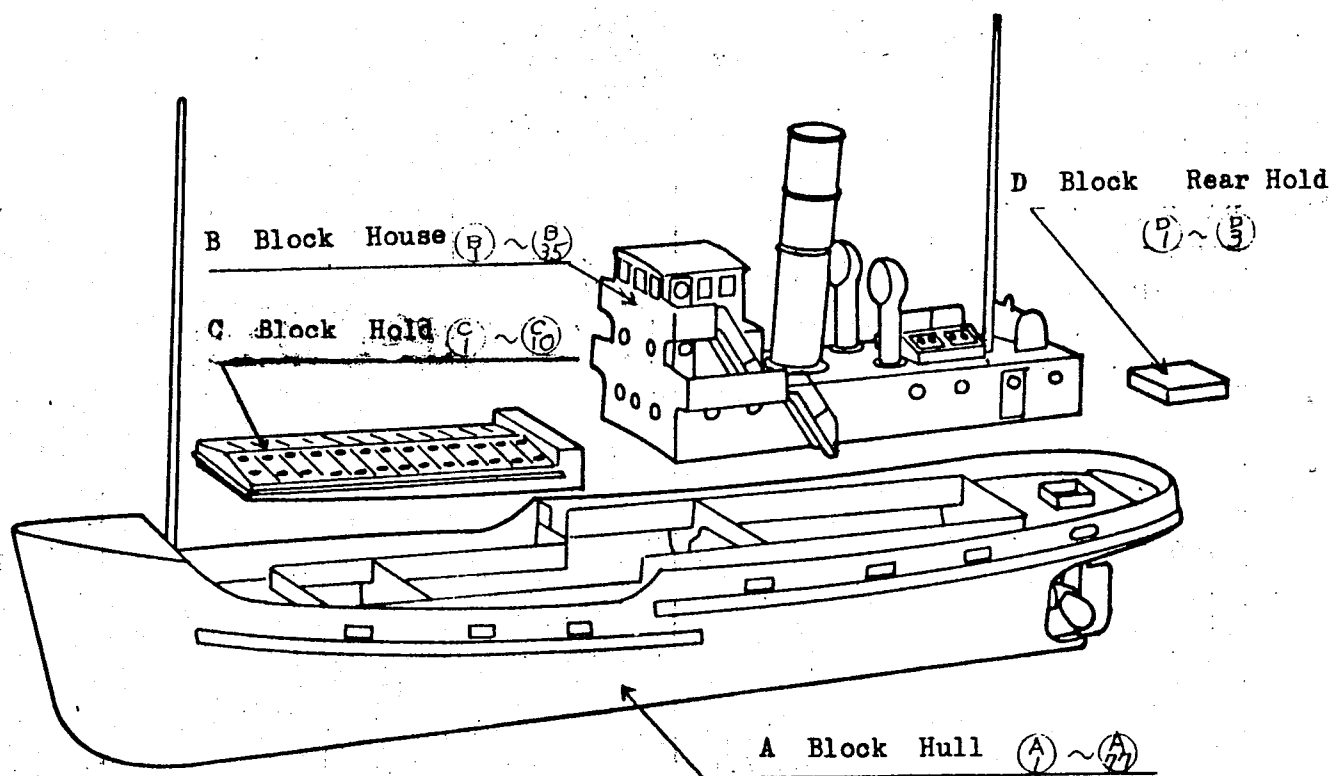
<u>Spraying</u>			<u>Brushing</u>	
Lacquer	White	1/5 liter	Plastic Color,	Black Iron
	Green	1/5 "	Lacquer Varnish	
	Black	1/5 "		
	Red	1/5 "		
	Blue	Small quantity		

Retarder, Lacquer Primer, Lacquer Surfacer (500 grams), Putty (Small quantity), Thinner (2 liters), Waterproof Abrasive Papers (#400 3 sheets and #800 1 sheet) and Sandpapers.

--- Linden plywoods and die cut parts are concerned, please do not use the back sides, which are clearly numbered, as the surface. ---

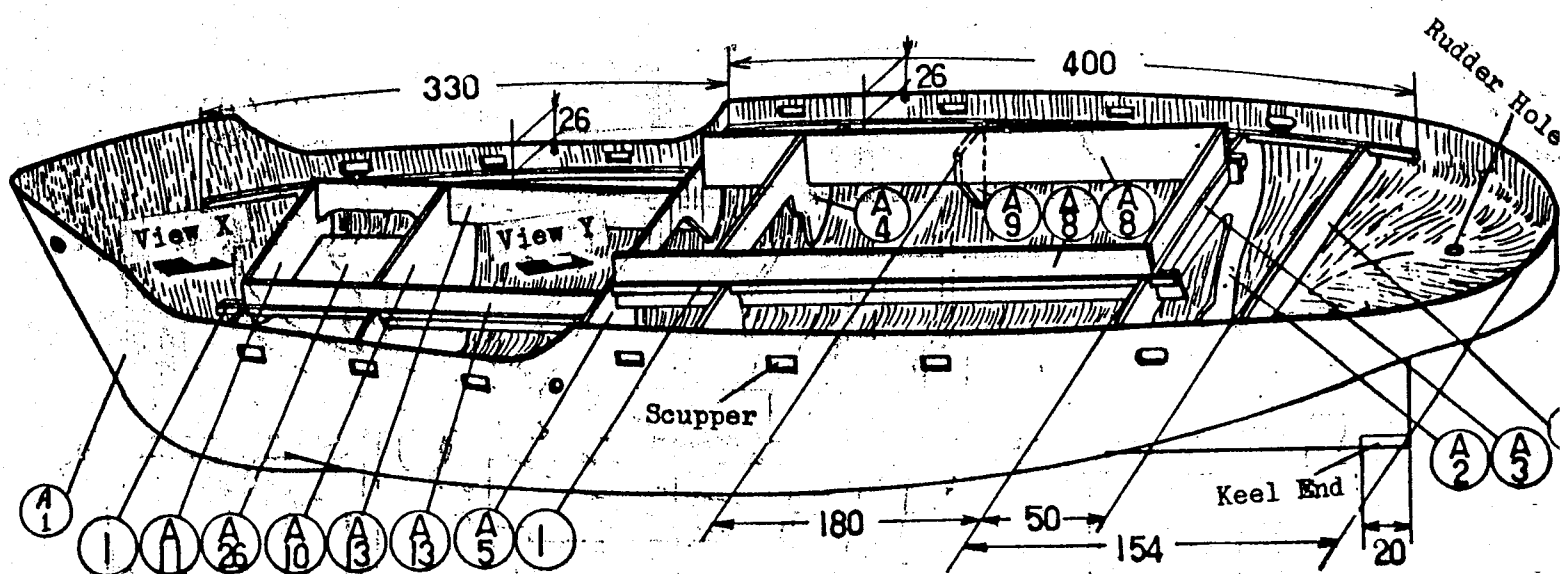
This kit is assembled and is disassembled into 4 blocks (A. B. C and D) as per drawing.

A Block	Hull	(A1) - (A77)	B Block	House	(B1) - (B35)
C Block	Hold	(C1) - (C10)	D Block	Rear Hold	(D1) - (D3)

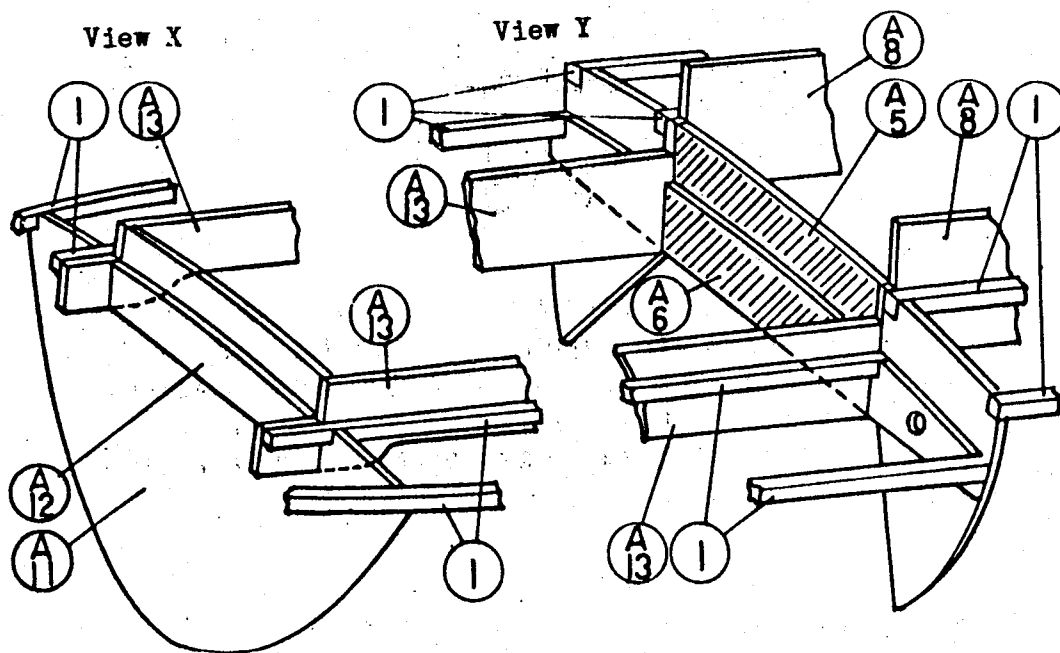


## A Block Hull

### 1. Frame Assembly of Hull



① is produced from common materials

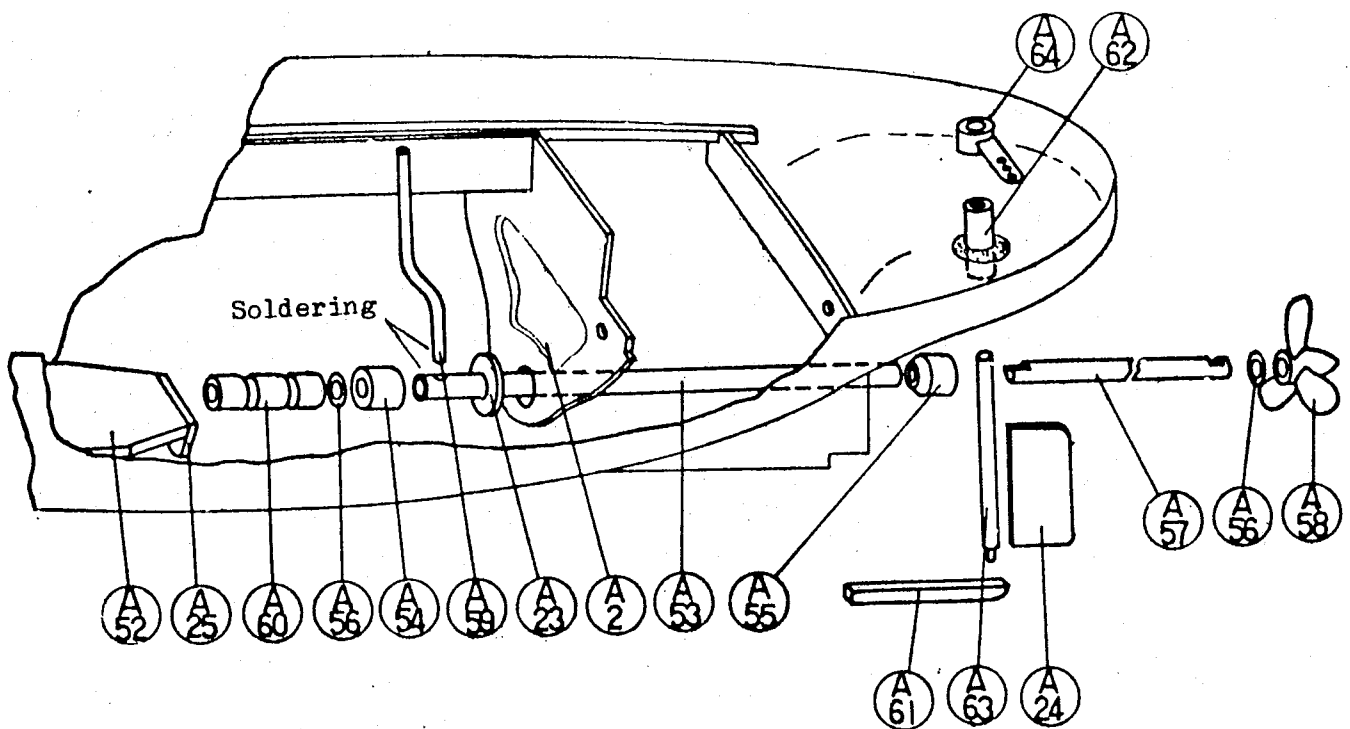


### Process

1. Make holes for Scuppers, (A62) Rudder Shaft Guide, (A61) Keel End, etc., in the hull.
2. Write a hair line of 26 m/m, using a compass, inside of the hull (A1) and fasten Hinoki Pole (1) temporarily under the hairline with [1].
3. Frame Board (A2) and (A3), (A5) and (A6), Frame Board (A11) and (A12) should be glued with [1] respectively.
4. Mark cementation positions of each (A7) and (A2) on the Hinoki Pole (4 x 4) (1) which was already glued temporarily with [1].
5. Based on (A2) as a standard, insert each frame board ((A4), (A5), (A8), (A10), (A13)) and fasten temporarily with [1]. Then, (A8) and (A13) should be glued to Hinoki Pole (1) (4 x 4) with [1]. Each frame glued by [1] and other spaces should be filled with [3] for cementation and reinforcement.

N.B.) When you glue wood, ABS, etc., to the hull, rough the glueing surfaces with a knife or metal file, etc., for complete glueing.

"B" liquid (27) is a surface treatment drug for glueing of ABS materials so that it should be coated on ABS by a brush, etc., and glue them within 20 minutes with [2] or [3].



A Block Hull

## 2. Fitting of Propeller, Rudder

### Process

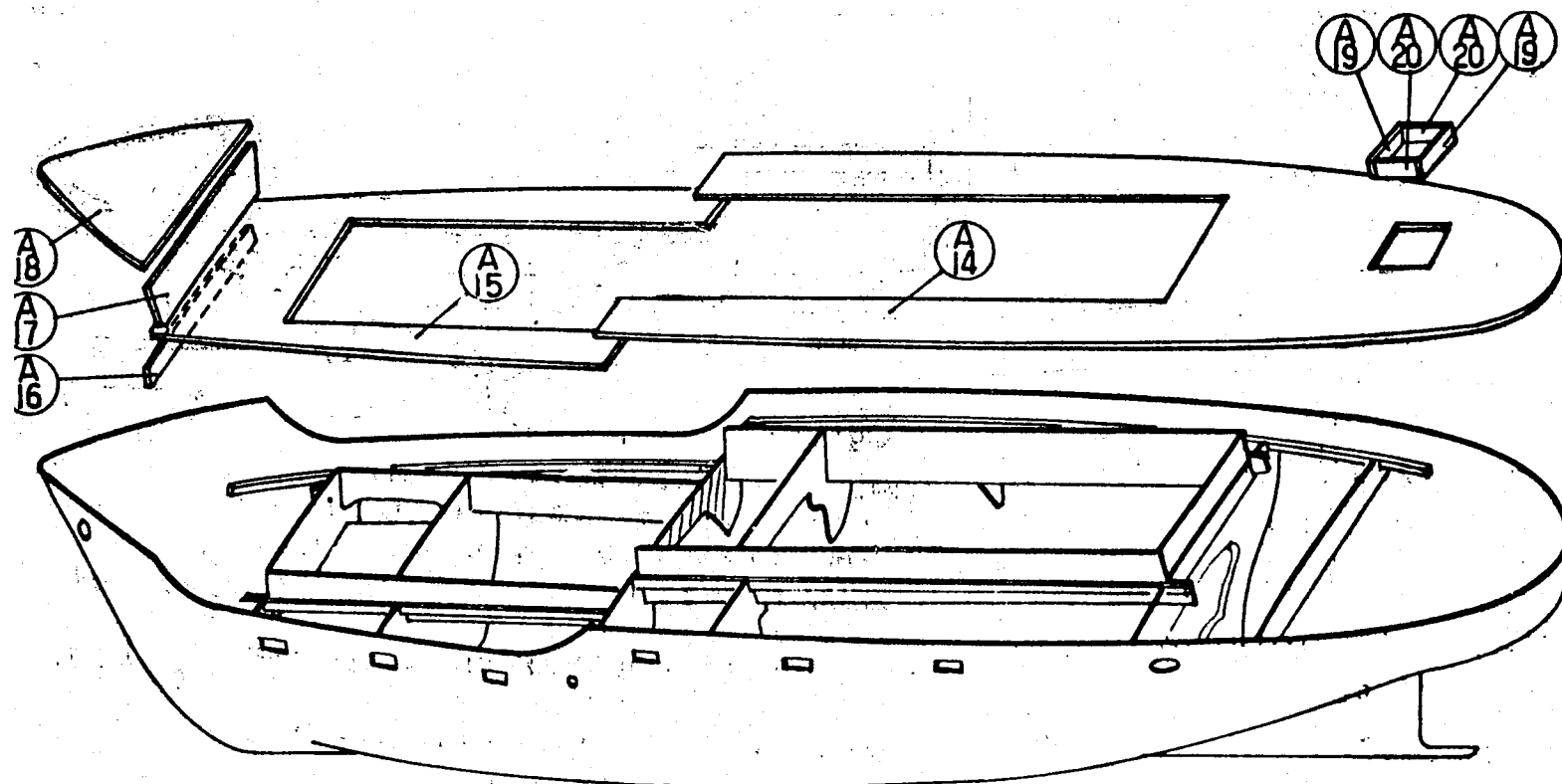
1. Solder A53 and A59. Then, insert A23 to Stern Tube and put in A53 from the hull inside. Fit A54 and A55 into the both sides of A53 and modify a touched part of A55 with a metal file, etc., for fitting. Attach A57 A56 A58 A60 to Stern Tube.
2. Place A52 to A10 straight and attach A60 to Engine. Set Propeller Shaft to turn lightly and fasten engine temporarily. Use 1 for temporary glueing of A23 A53. Then, A52 A23 A53 A25, etc., should be glued with 3.
3. A24 should be glued to A63 with 3 and modify them. A62 A61 are inserted to A53 and glue to A1 with 3. A1 and A55, A1 and radius of A66 are concerned, pile 3 for modification and finish.
4. Invisible sections after glueing of decks should be painted by clear lacquer as waterproof.

A Block Hull

### 3. Fitting of Decks

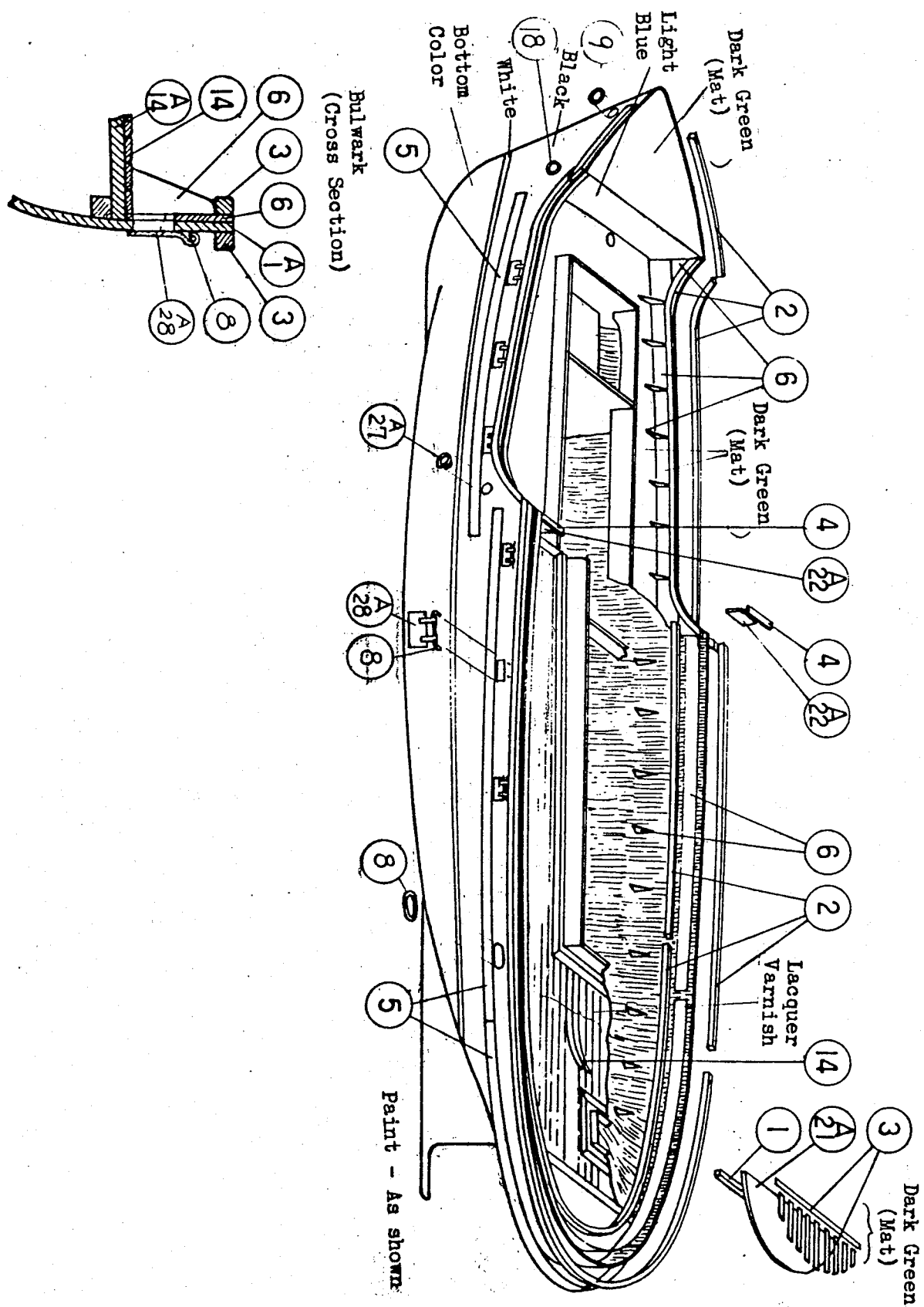
(A16) should be glued to (A15) with [3]. Apply [2] to Hull Frame Board and glue (A14) and (A15). After glueing of (A17) (A18) on (A15) with [3], cut off oblique section.

( Refer View Y, 1. Frame Assembly of Hull )



# A Block Hull

## 4. Fitting of Bulwark, Fender and Deck Materials



## Process

1. Glue (6) (1 x 25 ABS) to the inside of hull bulwark with [3] and make holes for scuppers. Extra ABS are modified to meet hull side using a knife and files, etc., so as to glue (2) (3 x 3 ABS) to the both sides of bulwark with [1]. Curve sections are adjusted to the hull using weak heat and glue them.
  2. Make lines with a compass for positions of (5) (2 x 10 ABS) on the outside of hull and glue (5) with [1]. Pile [3] in spaces for modification and finish.
  3. Glue (A22) to (A14) with [1] and glue (4) (2 x 5 ABS) on them with [1].
  4. Glue (1) (4 x 4 Hinoki Pole) to (A21) with [1] and glue them to (A1) with [3].
  5. After assembly of the house, (14) should be adjusted to house outboard and glue with [1].
  6. Bulwark stays are glued with [1] after painting of hull.
- The following parts are made from common materials.

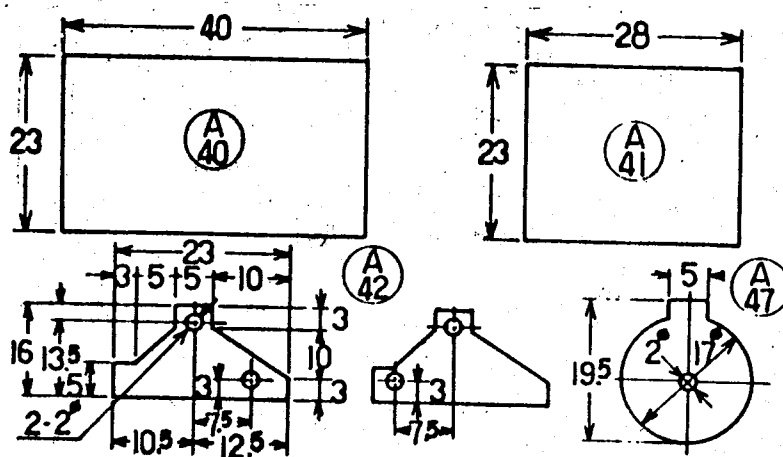
(1) (2) (3) (4) (5) (6) (8) and (9)

For example --- (1) Hinoki Pole

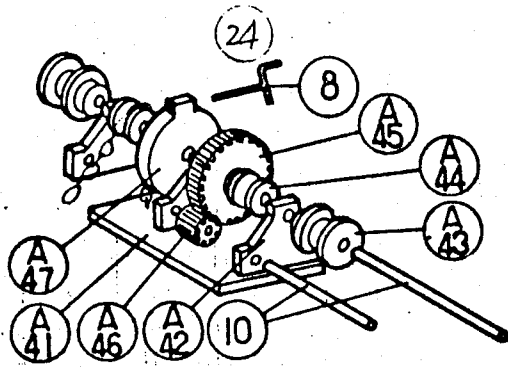
- A Block Fittings (Assemble every part respectively and glue them with [1] after paint)

## 5. Production of Derrick Winch and Windlass

(A42) consists of 6 pieces (2 types of 2 m/m hole positions are available)  
Use 3 m/m thickness die cut scraps for production using (A47) 2 pieces,  
1 each of (A40) and (A41).







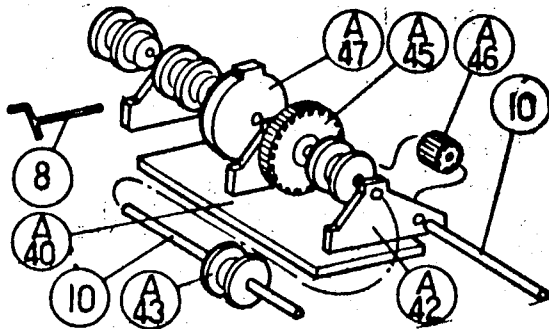
### Windlass

(24) Glue the top and tie round.

Use common materials for (8) and (10).

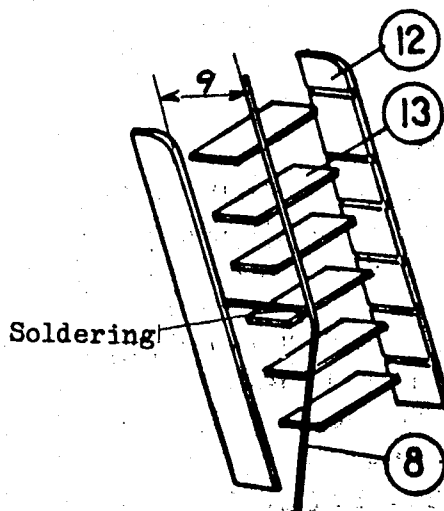
For example, (8) Brass Wire 0.8 m/m.

Paint ---- Light Blue



### Derrick Winch

Paint ---- Light Blue

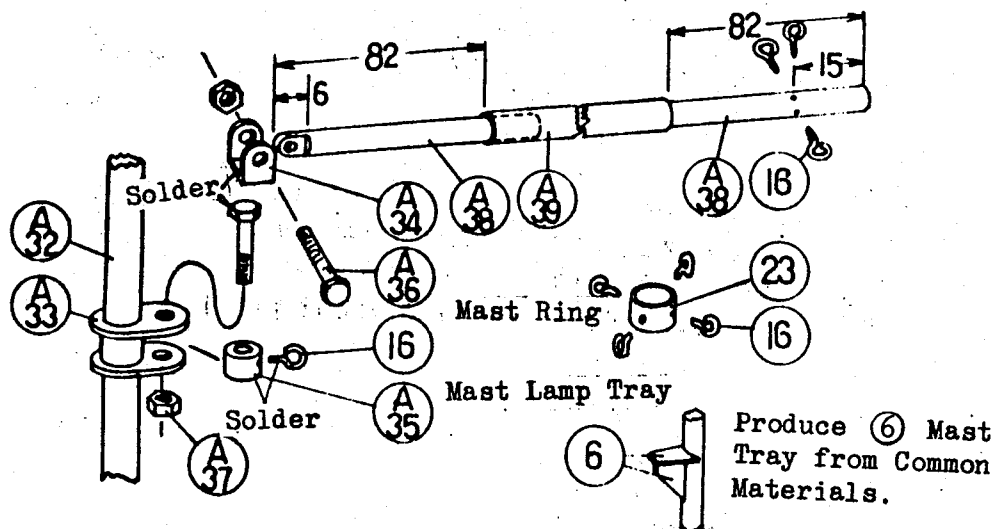


### 6. Steps

Use common materials for (8) (12) & (13).

Paint ---- Black

## 7. Assembly of Mast Derrick

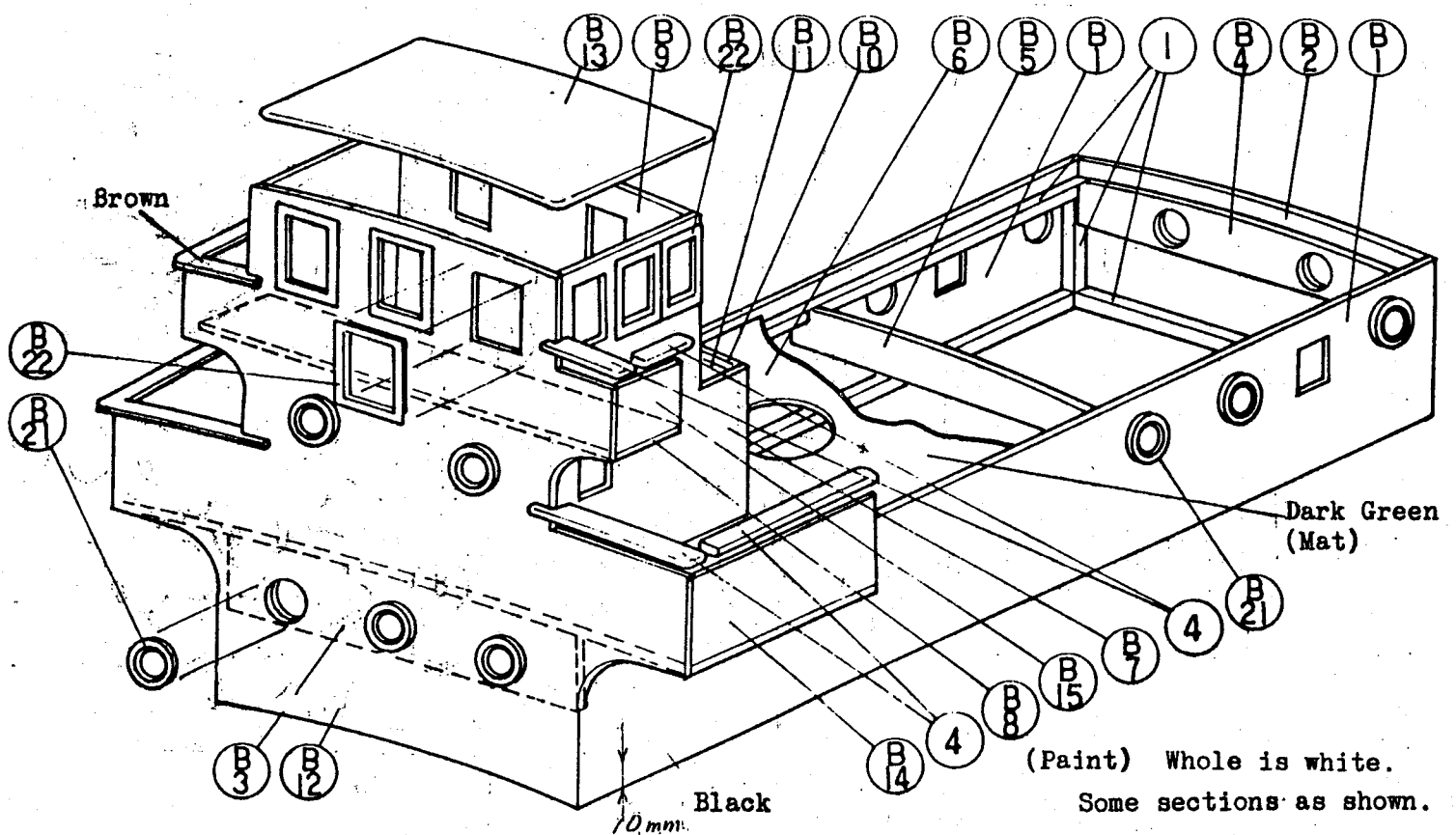


### Paint

Mast, Derrick Metals: Light Brown  
Boom : Light Blue

## B Block House

### 9. House Assembly



① & ④ are produced from common materials.

## Process

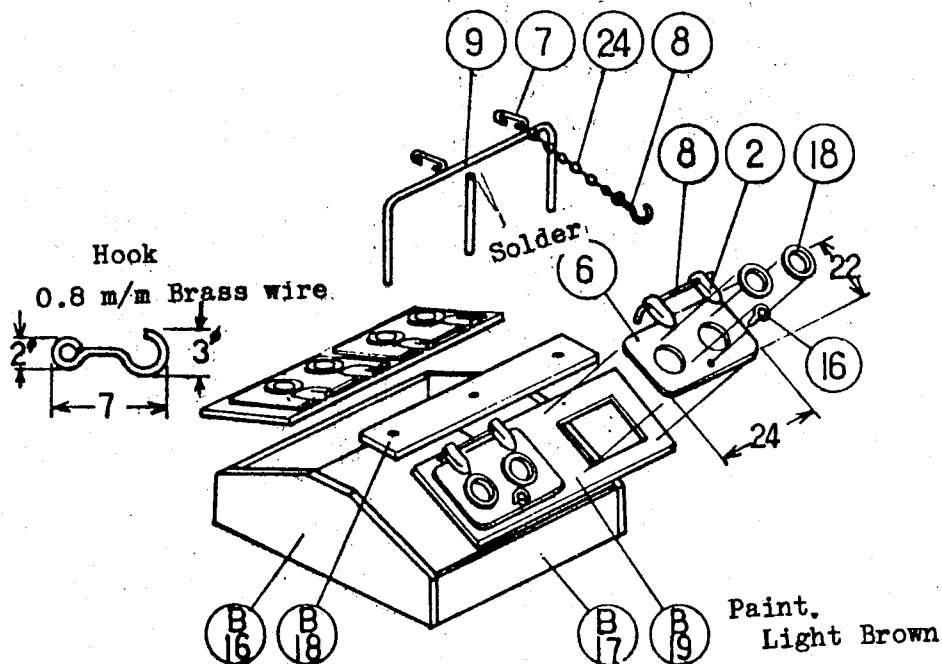
1. Glue ① (Hinoki Pole 4 x 4) to ①B1 and ①B2 with ①. After glueing of ①B4 and ①B2 with ①, glue ①B3 ①B5 to ①B1 ①B2 with ①. Then, glue ①B6 on ① ① (4 x 4 Hinoki Pole), ①B3 ①B4 ①B5 with ③.
2. Insert Steering House Deck to ①B7 and glue ①B9 ①B10 ①B11 with ①. After assembly, glue to ①B6 with ③. At this time, apply ③ to the sections where glued with ① for reinforcement.
3. Glue ①B12 to the assembled house with ③ and also glue ①B14 ①B15 with ①. Glue ④ (2 x 5 ABS) on Bulwark with ①. Every surface of section should be finished with sandpapers.
4. Glue ①4 to ①B13 with ①.

B Block House Fittings (Assemble every part respectively and glue them with ① after paint)

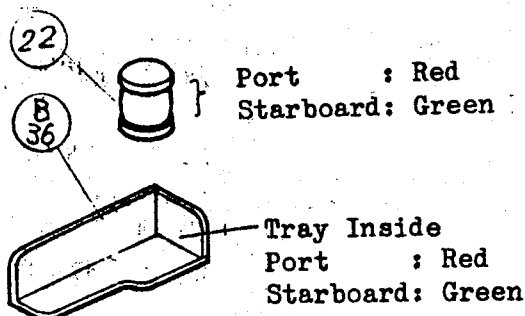
## 10 Skylight

Assemble and glue ①B16 ①B17 ①B18 ①B19 with ①. Skylight Hatch is produced from ⑥ (1 x 25 ABS) and ② (3 x 3 ABS).

② ⑥ ⑦ ⑧ ⑨ ②4 are produced from common materials.

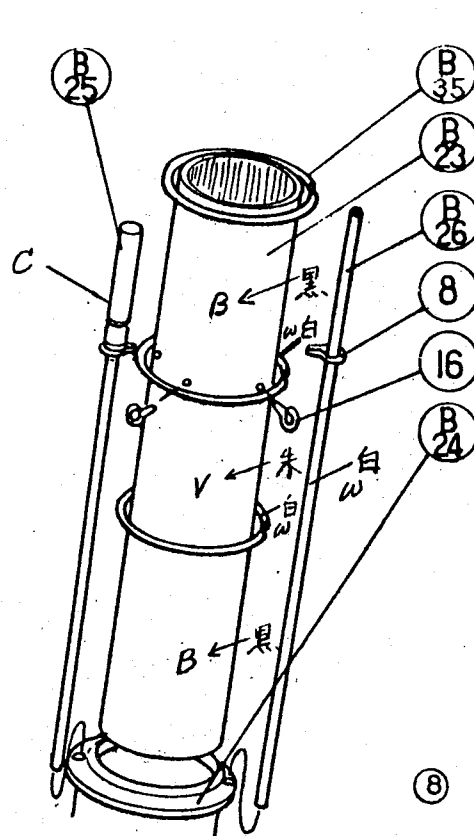


## 11 Side Light



Paint : White.  
Others as shown

## 12. Funnel

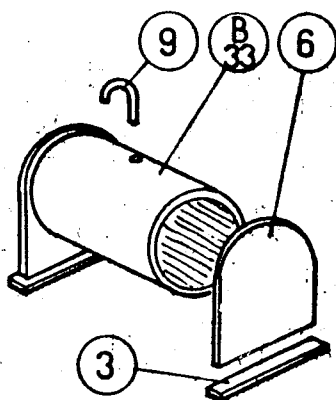


### Paint

B ..... Black  
W ..... White  
V ..... Vermilion  
C ..... Colorless

⑧ is produced from common materials.

## 13. Water Tank

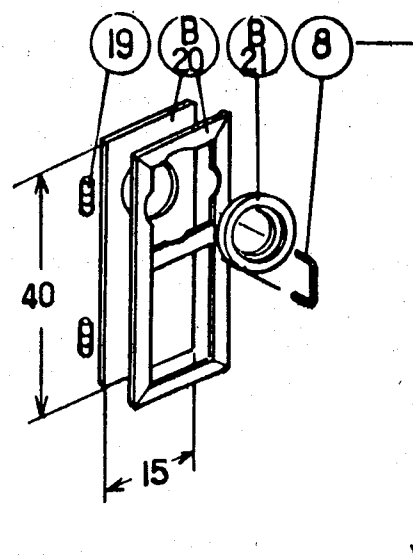


③ ⑥ ⑨ are produced from common materials.

### Paint

Light Blue

## 14. Door

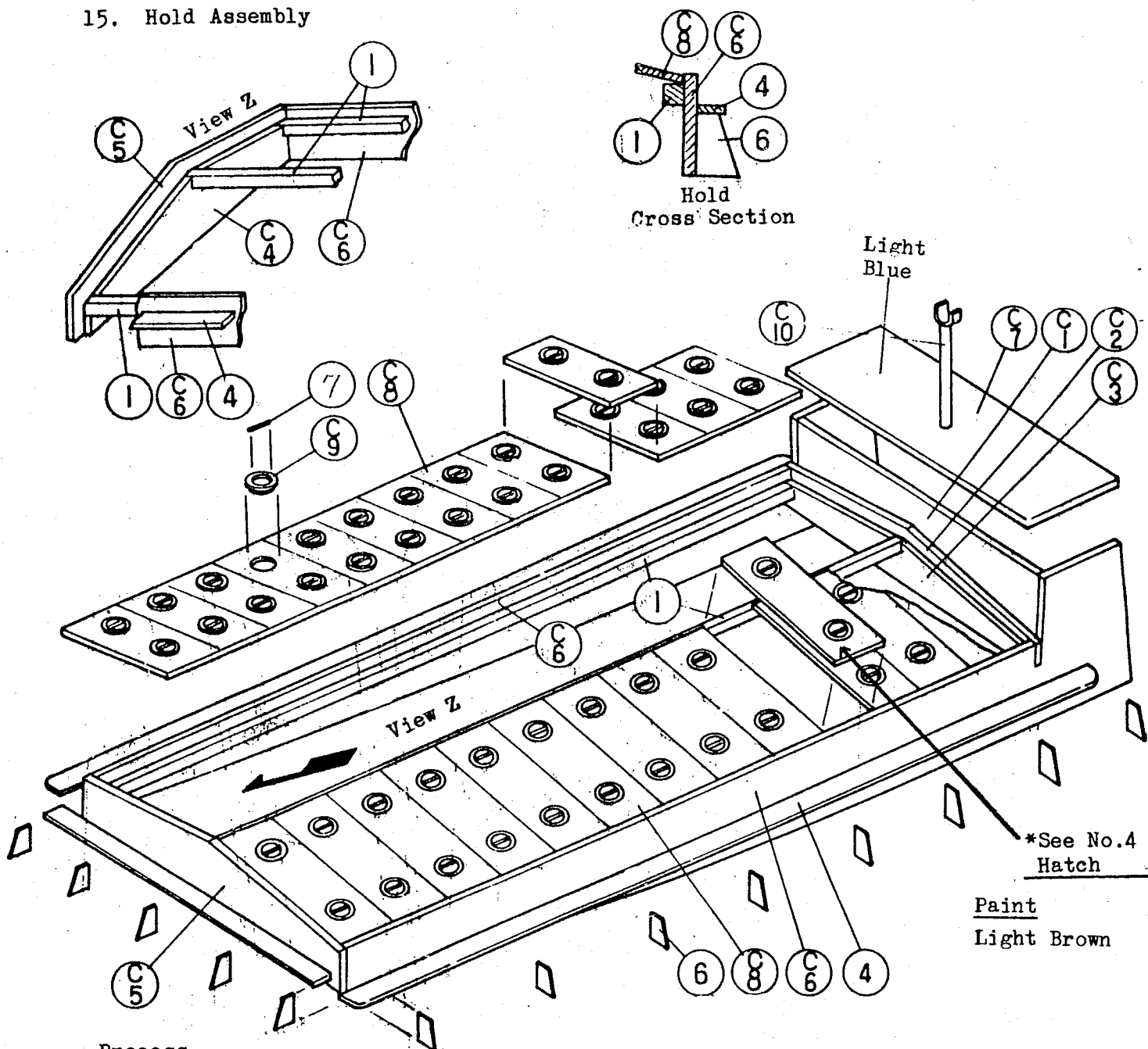


⑧ is produced from common materials.

### Paint

Lacquer Varnish

C Block Hold  
15. Hold Assembly



Process

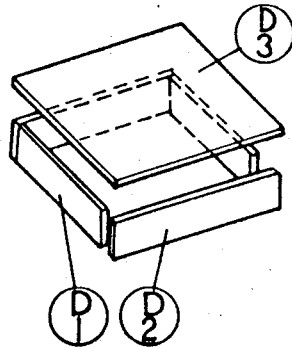
1. Glue Hold Frames (C1) (C2) (C3) with [1] and glue (C4) (C5) with [1]. Insert (C2) to the ditch of (C6) while (C4) is put between (C6) and (C7) for glueing with [1].
2. Glue (1) (Hinoki Pole 4 x 4) to (C6) (C3) (C4) with [1]. Glue (C7) with [1] and also glue (C8) on (1) with [3].
3. Glue (4) (2 x 5 ABS) around (C5) (C6) (C7) with [1]. Hold should be positioned on Hold Coaming and modify to adjust Stay, which cut down from (6) (1 x 25ABS), to deck radius. Then, glue to (C5) (C6) with [1].
4. Make a hole (3 m/m) in (C7) and glue (C10) with [3]. After Hold painting, cut off (7) Brass Wire for (C9) and glue with [1]. Then, glue it to (C8) with [1].

\* No.4 Hatch

Hold Hatches are concerned, the 4th hatch from the house side should be freed for ventilator and confirmation window during sail.

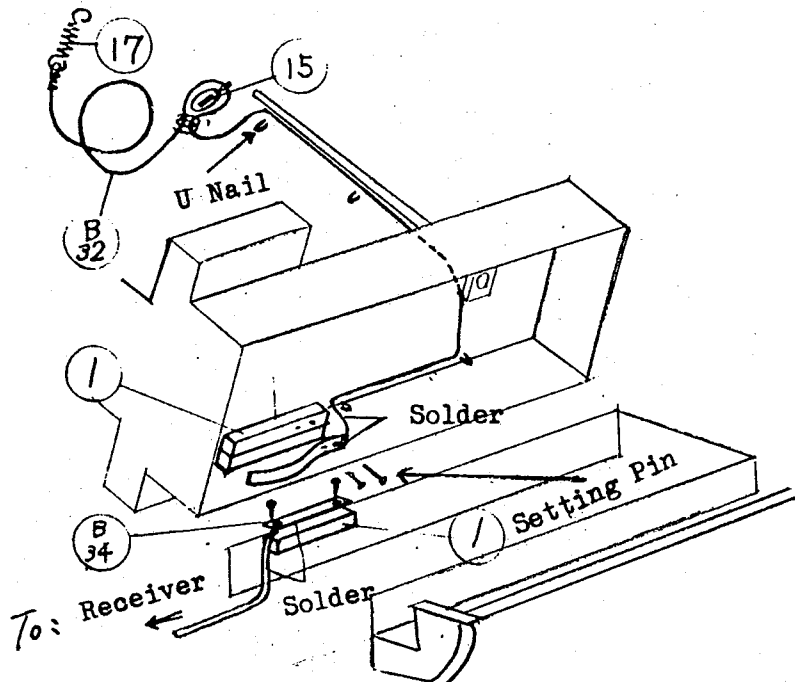
D. Block Rear Hold

16. Assembly of Rear Hold Hatch

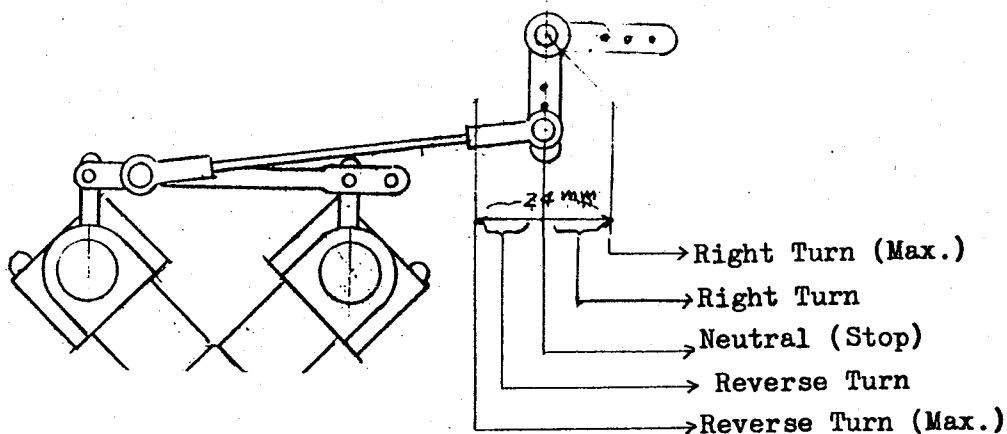


Paint  
Light Blue

17. Antenna Wiring



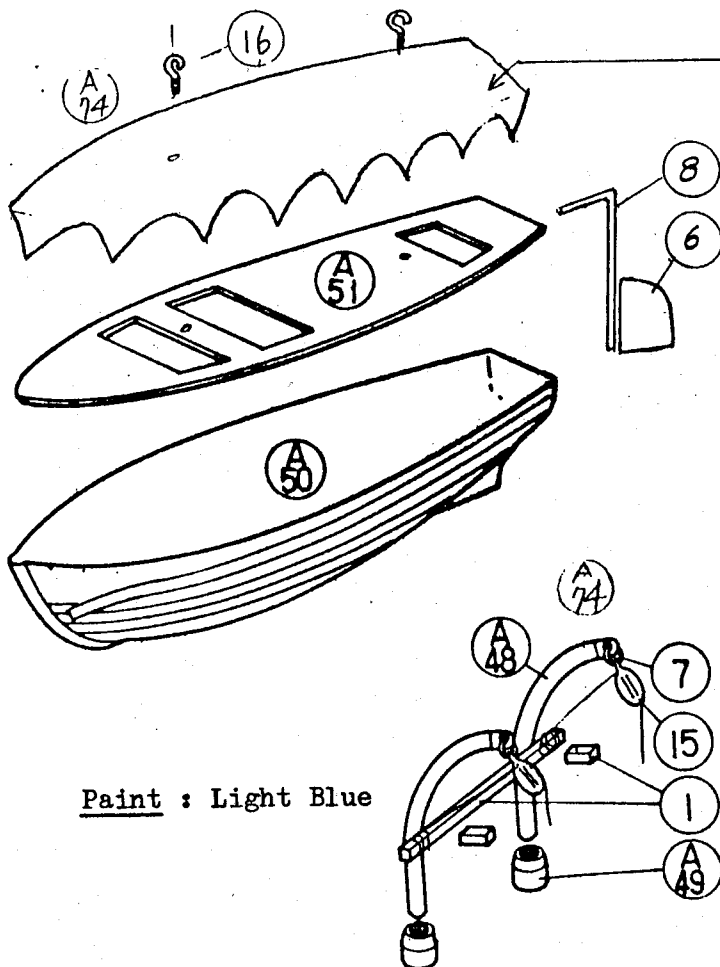
Engine Control Rod



# A Block Fittings

## 8. Boat Davit, Life Boat Assembly

① ⑥ ⑦ ⑧ are produced from common materials.

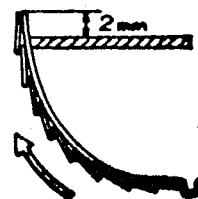


Make paper sheet cover by yourself.

### Clinker Built

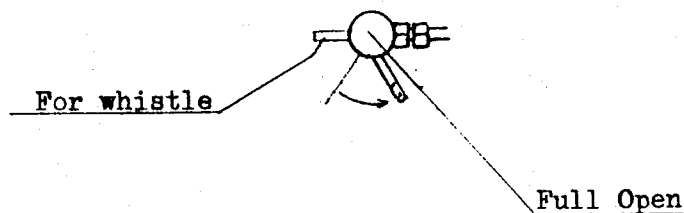
Use a thin cardboard making 25 sheets (@ 3 m/m width, 100 m/m length). Glue them from the bottom as per drawing.

### Boat Cross Section



Paint : Light Blue

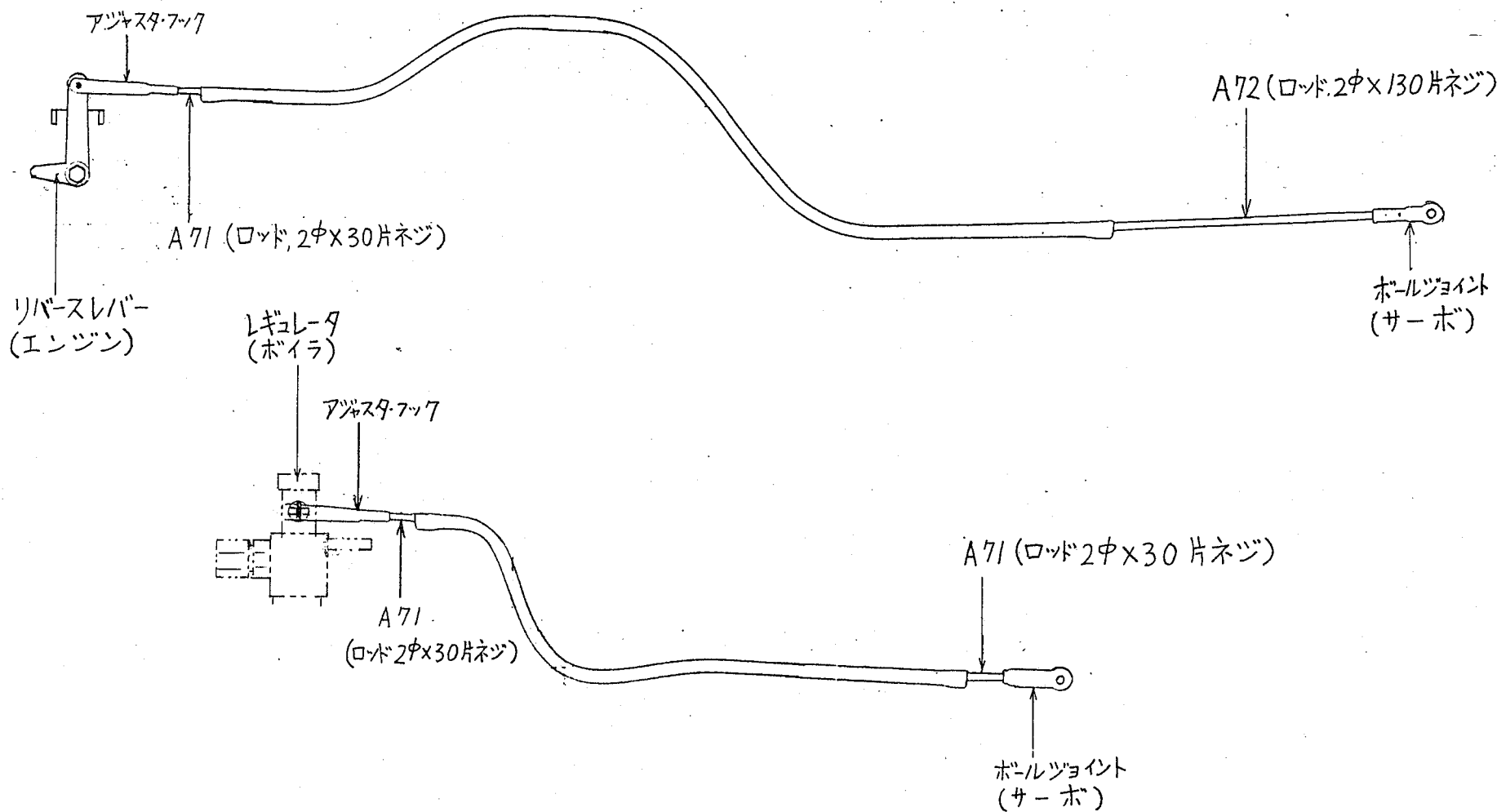
Do not open Boiler Regulator Lever fully so that steam does not come out from the pipe mouth for whistle.



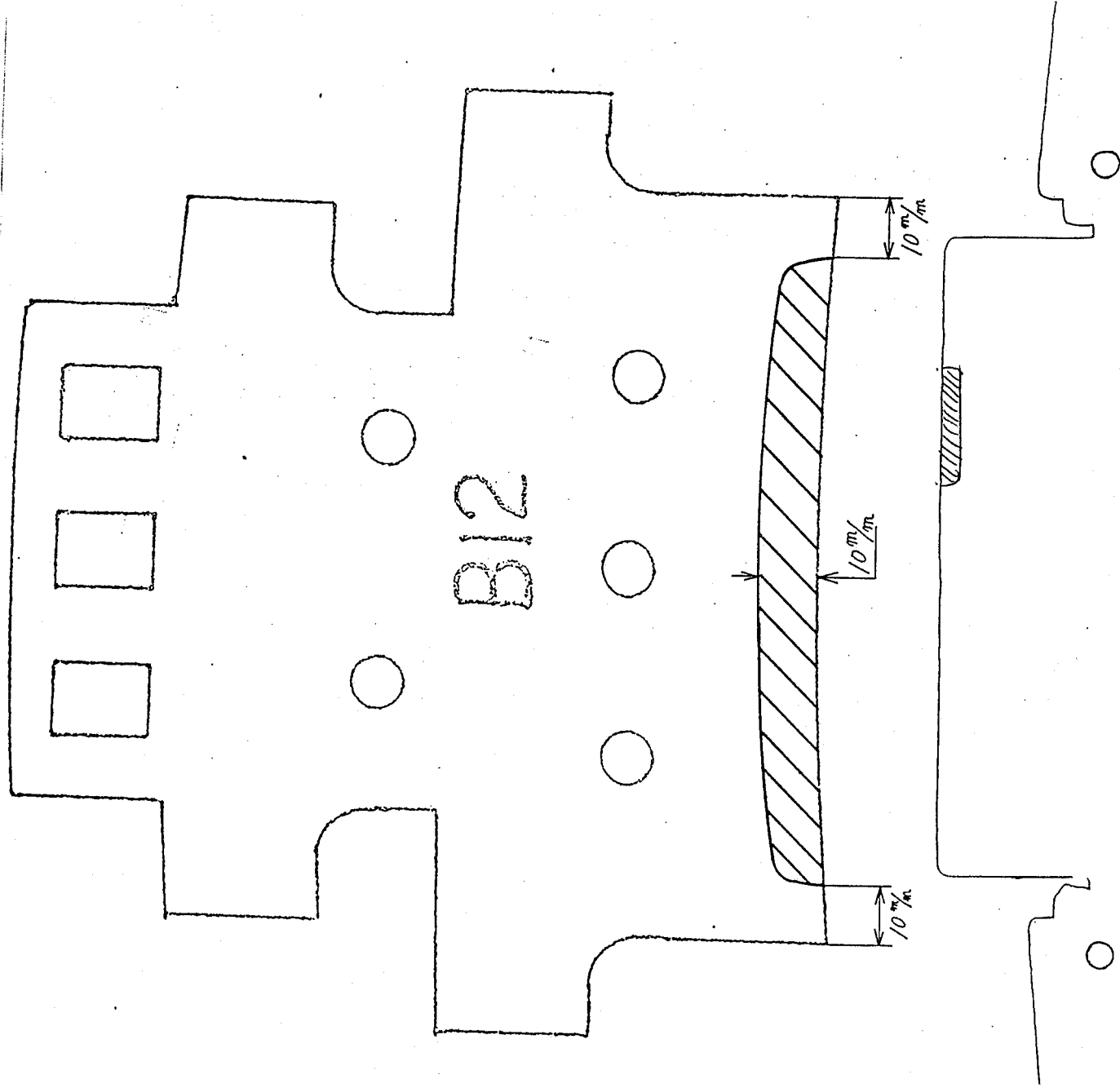
リンケージロッド取付図 (側面より)

船尾側

船首側







A 10

A10, B12は斜線部を図の様にカットする。

STAR LIGHT

スターライト

Die-cut plywood parts number list

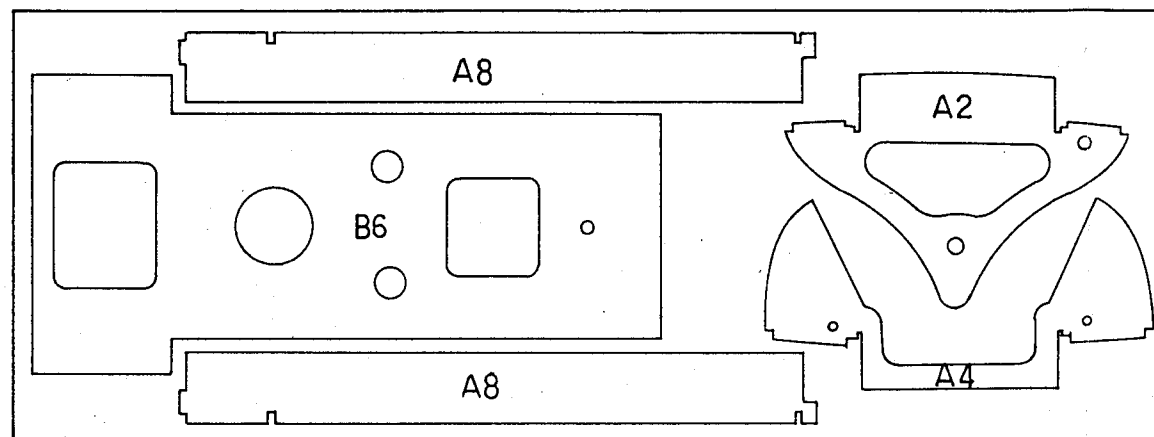
木製部品番号表

Wishing : Please number each part by this list prior to detaching it from the plywood. When assembling, use the back where it is unnumbered.

お客様にお願ひ : 部品を打ち抜く前に、この部品番号表により、各部品に番号を記入して下さい。  
組立の時は、部品番号を記入した面を、うら側にして下さい。

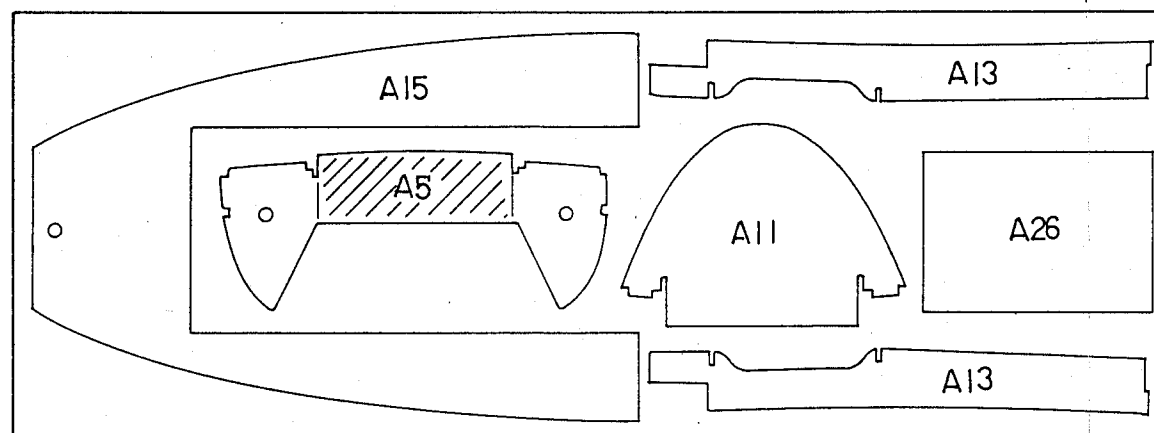
N0.1

板厚3mm

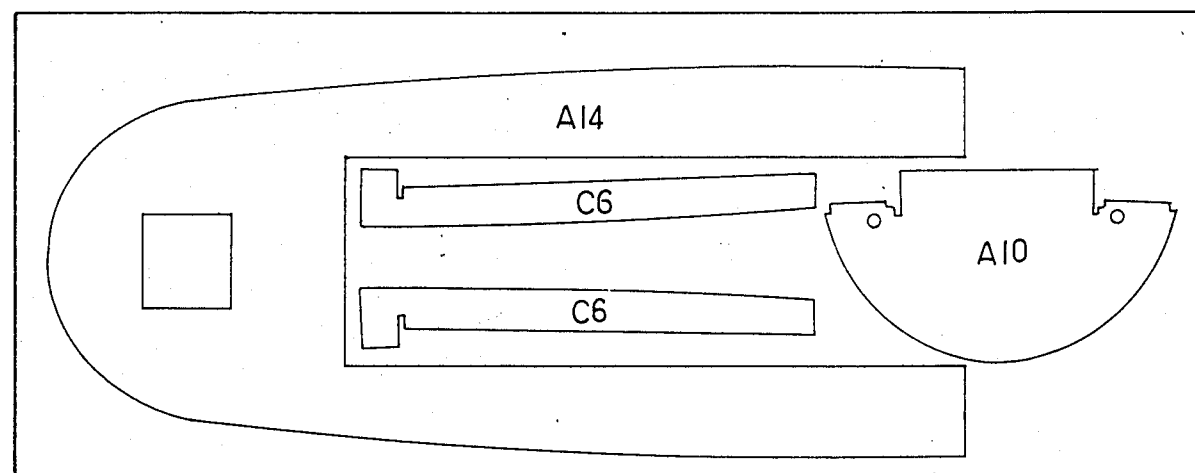


N0.2

板厚3mm

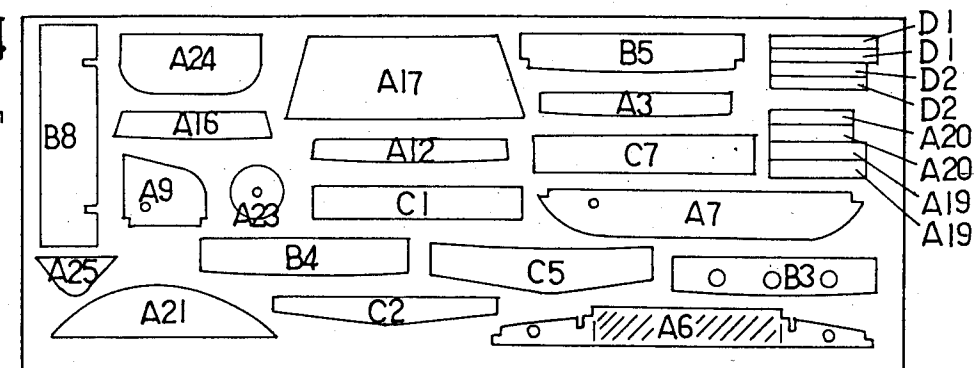


N0.3 板厚3mm



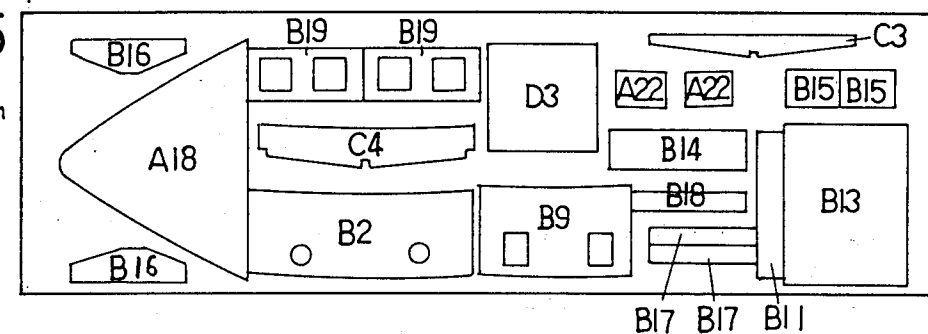
N0.4

板厚3mm



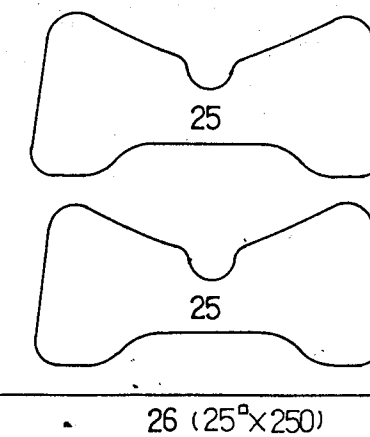
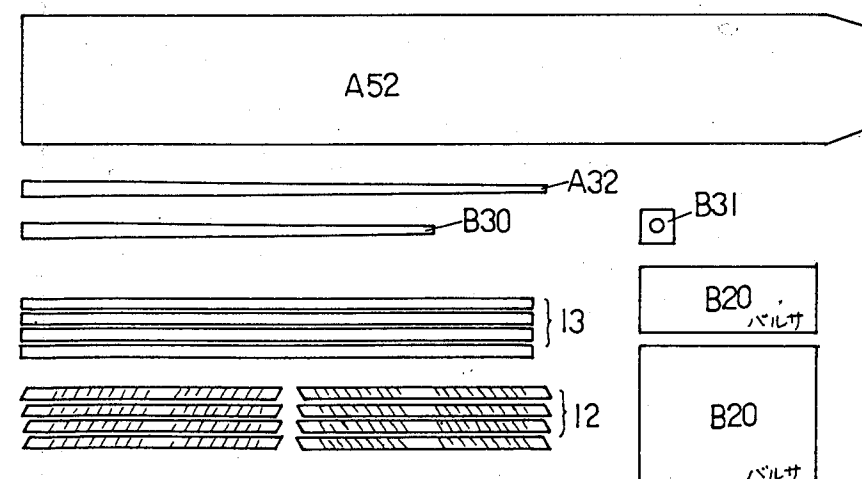
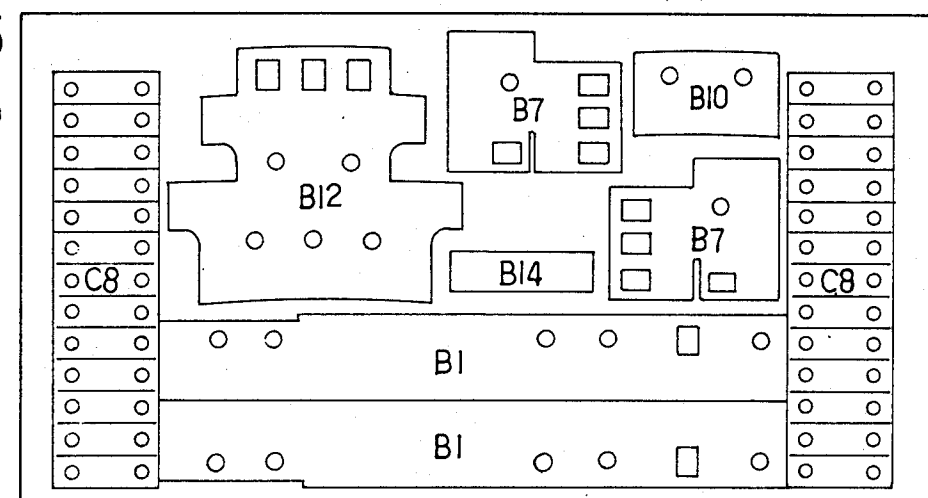
N0.5

板厚2mm



N0.6

板厚2mm



# Part List

Part No.	Description	Quantity	Remarks
A	Block Hull		
A1	Hull	1	F.R.P.
2	Frame Board	1	Linden P.W. 3 m/m
3	Reinforcement Board	1	" " "
4/7	Frame Board	4	" " "
8	House Coaming	2	" " "
9	Control Tube Support Board	1	" " "
10/11	Frame Board	2	" " "
12	Reinforcement Board	1	" " "
13	Hold Coaming	2	" " "
14	Rear Deck	1	" " "
15	Forward Deck	1	" " "
16	Frame Board	1	" " "
17	Bow Hold Out Board	1	" " "
18	Bow Deck	1	" " 2 m/m
19/20	Hold Coaming	2	" " 3 m/m
21	Stern Deck	1	" " "
22	Bulwark	2	" " 2 m/m
23	Stern Tube Support Board	1	" " 3 m/m
24	Rudder	1	" " "
25	End Board	1	" " "
26	Servo Tray	1	" " "
27	Soupper	2	Eyelet
28	Draining Hatch	12	Brass
29	Anchor	2	Antimony
30	Fair Leader	2	"
31	Capstan	8	Aluminum
32	Forward Mast	1	5 m/m x 350
33	Derrriok Fulcrum Metal	1	Brass
34	" Pin Metal	1	"
35	" Collar	1	"
36	Bolt	2	"
37	Nut	2	"
38	Derrriok Boom	2	5 m/m x 100
39	" "	1	Aluminum Pipe
40	Winoh Base	1 (3 m/m)	From Die cut scrap
41	Windlass Base	1 ( do )	" " " "
42	Shaft Receiver	6	" " " "
43	Drum (Big)	6	Aluminum
44	Drum (Small)	2	"
45	Gear (Big)	2	17 m/m
46	Gear (Small)	2	6 m/m
47	Gear Case	2 (3 m/m)	From Die cut scrap
48	Boat Davit	2	Aluminum
49	" " Fitting Base	2	"
50	Life boat	1	Vinyl Chloride
51	" " Frame Board	1	Linden P.W.
52	Engine Bed	1	5T x 75 x 405
53	Stern Tube	1	Brass Pipe, 6m/m x 115
54	Inside Metal	1	Brass
55	Outside Metal	1	Brass
56	Teflon Washer	2	
57	Propeller Shaft	1	4 m/m x 150, Stainless S.
58	"	1	With screw
59	Oiling Pipe	1	Brass Pipe, 3m/m x 120
60	Joint	1 set	

61	Keel End
62	Rudder Shaft Guide
63	" "
64	" Horn
65	Ball Joint
66	Joint Rod
67	Flexible Control Rod
68	Bell Crank Mount
69	Wood Screw
70	Bell Crank
71	Screw and Nut
72	Control Rod
73	Neoprene Tube
74	Rope
75	Decal
76	Buoy
77	Exhaust Nozzle
78	Burner Holding Board

1	ABS
1	Brass
1	"
1	With screw
6	" " & nut
4	2m/m x 20, Full screw
2 sets	
1	Brass
6	2 m/m x 6
1	Plastic
1 set	M3
1	2m/m x 50, Both screw
1	2.2 m/m x 0.8 meter
1 roll	Thread, 2.5 meter
1 set	
2	Plastic
3	Brass Pipe, 3m/m x 25
2	

# B      Block      House

B1	House Outside Board
2	" " "
3/5	House Reinforcement Board
6	House Deck
7	Steering House Outboard
8	" " Deck
9	" " Outboard
10	House Outboard
11	Steering House Deck
12	House Outboard
13	Steering House Roof
14	House Bulwark
15	Steering House Bulwark
16/17	Sky Light
18	" "
19	" "
20	Door
21	Round Window (Medium)
22	Square "
23	Funnel
24	" Flange
25	Whistle
26	Exhaust Pipe
27	Ventilator Upper
28	" Middle
29	" Flange
30	Mast Rear
31	Mast Reinforcement Material
32	Antenna Wire
33	Water Tank
34	Antenna Connector
35	Funnel Ring
36	Side Light Tray

2	Linden P.W. 2 m/m
1	" " "
3	" " 3 m/m
1	" " "
2	" " 2 m/m
1	" " 3 m/m
1	" " "
1	" " "
1	" " 2 m/m
1	" " "
1	" " "
2	" " "
2	" " "
4 (2 each)	" " "
1	" " "
2	" " "
7	Balsa, 1.5 m/m
27	Brass
9	"
1	Aluminum Pipe, 39 m/m
1	"
1	Brass
1	Brass Pipe, 3 m/m
2	Aluminum
2	Aluminum Pipe, 15 m/m
2	Aluminum
1	5 m/m x 260
1	Plywood, 9 m/m
1 roll	1.5 meter
1	Alum. Pipe, 22m/m x 40
1 set	Phosphor Bronze Plate
3	Brass
2	"

# C      Block      Hold

C1/C2	Hold
3/4	"
5	"
6	"

2	Linden P.W. 3 m/m
2	" " 2 m/m
1	" " 3 m/m
2	" " "

7	Hold	1	Linden P.W. 3 m/m
8	Hatch	2	" " 2 m/m
9	Handle	52	Brass
10	Derrick Supporter	1	Aluminum

D            Block            Hold    Rear

D1	Hatch	2	Linden P.W. 3 m/m
2	"	2	" " "
3	"	1	" " 2 m/m

COMMON MATERIALS

1	Hinoki Pole	6	4 x 0.9 meter
2	ABS Pole	4	3 x 1 meter
3	" Board	1	1T x 3 x 1 meter
4	" "	1.5	2T x 5 x 1 "
5	" "	2	2T x 10 x 1 "
6	" "	3.5	1T x 25 x 1 "
7	Brass Wire	1	0.5 m/m x 0.5 "
8	" "	1	0.8 m/m x 1 "
9	" "	1	1.5 m/m x 0.5 "
10	" "	1	2.0 m/m x 0.25 "
11	Wire	1 roll	3.5 meter
12	Stairway Side Board	8	
13	" Step "	4	1.5T x 5 x 300
14	Deck Materials	17	1.5T x 6 x 600
15	Pulley	12	Plastic
16	Fittings	40	Brass
17	Spring	18	
18	Round Window (Small)	10	Brass
19	Door Hinge	16	
20	Mast Top	2	Aluminum
21	3 Step Hand Rail	29	Brass
22	Lamp	4	Aluminum
23	Mast Ring	3	Brass Pipe
24	Chain	1	0.15 meter
25	Shipway	2	
26	"	1	
27	"B" Liquid	1	Pre-treatment drug.